



Pearson

# MyLab

## December 2017 Update

Increased personalization and  
simplified navigation between courses



# What's Inside?

- 3 Release Overview
- 4 Personalization and Accessibility Updates
- 6 Navigation Updates
- 8 eText App Update



# The **December MyLab 2017 Release**

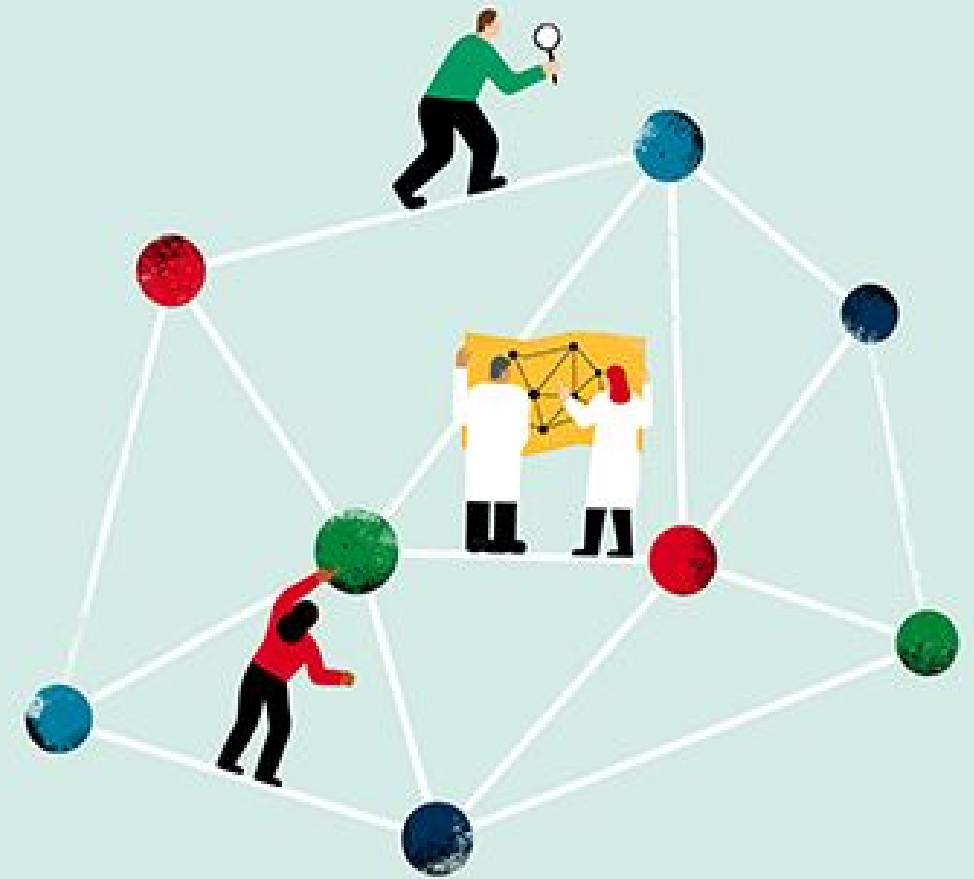
Gives you an additional way to personalize MyLab and simplifies navigation between courses

# Making MyLab More Personal and Accessible

---

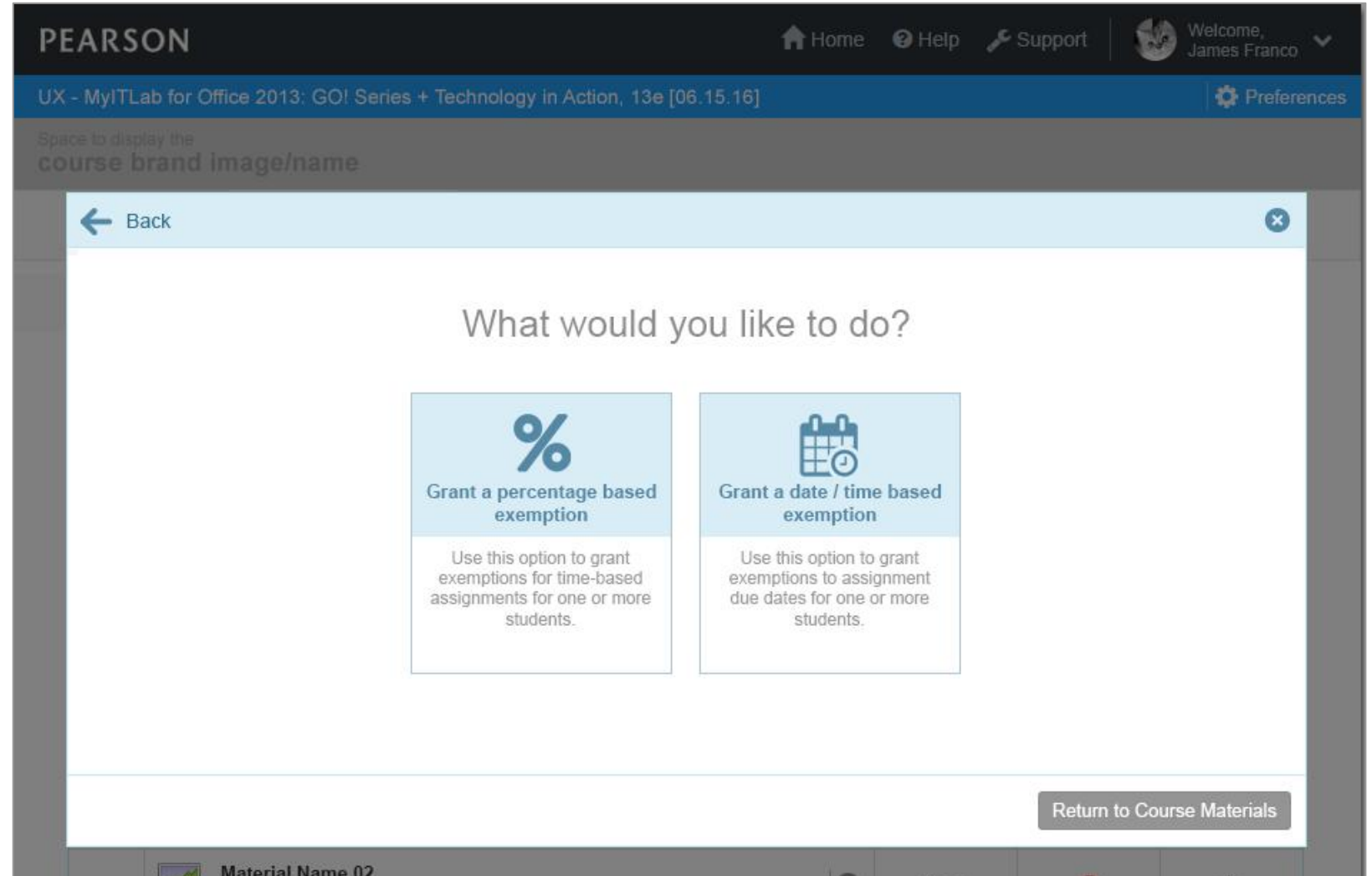
The December 2017 update makes improvements to ensure MyLab is as personalized and accessible as possible to all students.

In addition to general accessibility enhancements for the Student Calendar and Course Materials pages, you will now be able to adjust the time limit values for students requiring additional time on assignments.



# Personalized Scheduling of Assignments

With the December 2017 release, you will have a simple way to grant students additional time on assignments using a percentage based exemption for time-based assignments or a due date based exemption. This enhancement will make it easier for you to manage student accommodations with fewer clicks.



The screenshot displays the Pearson MyITLab interface. At the top, the Pearson logo is on the left, and navigation links for Home, Help, and Support are on the right. A user profile for James Franco is visible. Below the navigation bar, the course title "UX - MyITLab for Office 2013: GO! Series + Technology in Action, 13e [06.15.16]" is shown, along with a Preferences icon. The main content area features a "Back" button and a central question: "What would you like to do?". Two options are presented in light blue boxes:

- Grant a percentage based exemption**: Accompanied by a percentage icon. The description reads: "Use this option to grant exemptions for time-based assignments for one or more students."
- Grant a date / time based exemption**: Accompanied by a calendar icon with a clock. The description reads: "Use this option to grant exemptions to assignment due dates for one or more students."

A "Return to Course Materials" button is located at the bottom right of the main content area. The footer of the interface shows "Material Name 02".

# Navigation Improvements

---

If you're using MyLab to teach multiple courses, it's now easier and faster to navigate between courses.



# Easier Navigation

Today, when you select “My Courses” from the left-navigational menu, you are sent back to the main My Courses home page. The December update will return you to the same My Courses page from which the course was launched (homepage, inactive tab, search results, member section page, etc.), making it easier for you to quickly navigate to where you need to go.

The screenshot displays the 'MyLab Statistics' interface. On the left is a vertical navigation menu with the following items: 'My Courses' (highlighted with a red box), 'Manage Course', 'Course Home' (highlighted in blue), 'Homework', 'Quizzes & Tests', 'Student Activity Workbook', 'Study Plan', 'Gradebook', 'StatCrunch', and 'Chapter Contents'. The main content area is titled 'Course Home' and includes a section for 'Intro to Stats' with an 'Announcements' link. Below this is a calendar for 'October' showing the days SUN, MON, TUE, and WED with dates 8, 9, and 10. At the bottom, a 'What to Work on Next' section states 'There are currently no upcoming assignments' and provides a link to '> View All Assignments'.

# Extend the Learning Experience- Anytime and Anywhere

---

The December 2017 update offers enhancements to the Pearson eText to provide a more mobile-friendly and accessible experience for students.



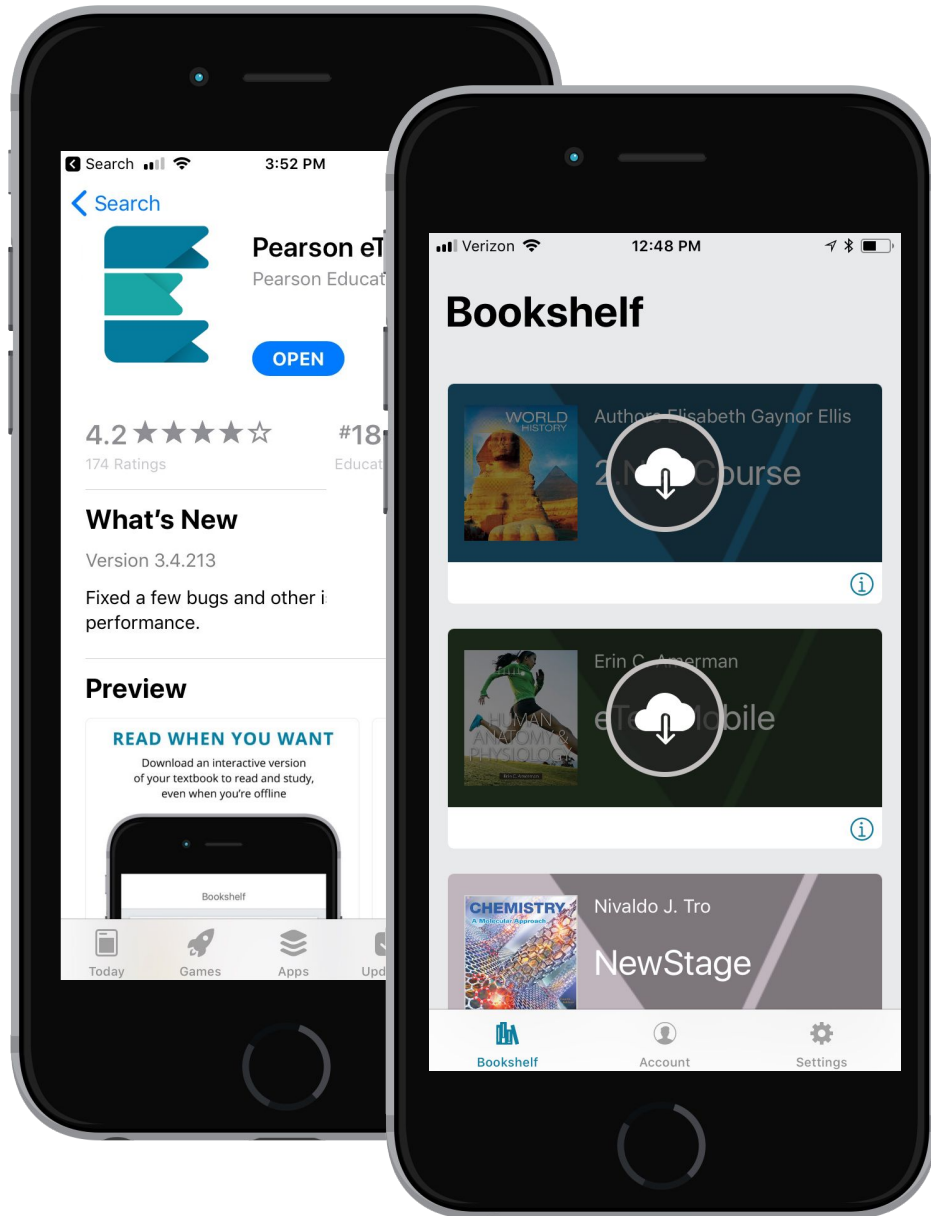


# All eTexts now available on mobile phones

With the updated Pearson eText app for iOS and Android mobile devices, students can access any MyLab eText and read how they want: anytime, anywhere, even offline.

Students can also

- Track exactly what they need to study by creating notes and highlights
- Learn with interactive images, videos, and animations (available with select titles)
- Search for content



ALWAYS LEARNING